

常州钟楼数据中心

华东云计算基地一期项目

Changzhou Zhonglou Data Center
China Mobile diamond-5-star data center



便捷云
www.bjyun.cn

2017年被评为中国移动钻石五星级数据中心



战略布局

The Strategies of the Future



鄂尔多斯1A数据中心, 10000平方米, 1225个机柜, 2014年投产

Ordos Data Center 1A, 10,000m², 1,225 cabinets; Operational since 2014

南宁五象数据中心, 规划面积10万平方米, 12000个机柜, 一期2000柜, 2018年投产

Nanning Wuxiang Data Center, 100,000 m², 12,000 cabinets, 1st Phase 20,000m², 2,000 cabinets will operational in 2018.

广州观达数据中心, 24000平方米, 2764个机柜, 2018年投产

Guangzhou Guanda Data Center, 24,000m², 2,764 cabinets will operational in 2018.



北京马驹桥数据中心, 面积16000平方米, 2903个机柜, 2015年投产

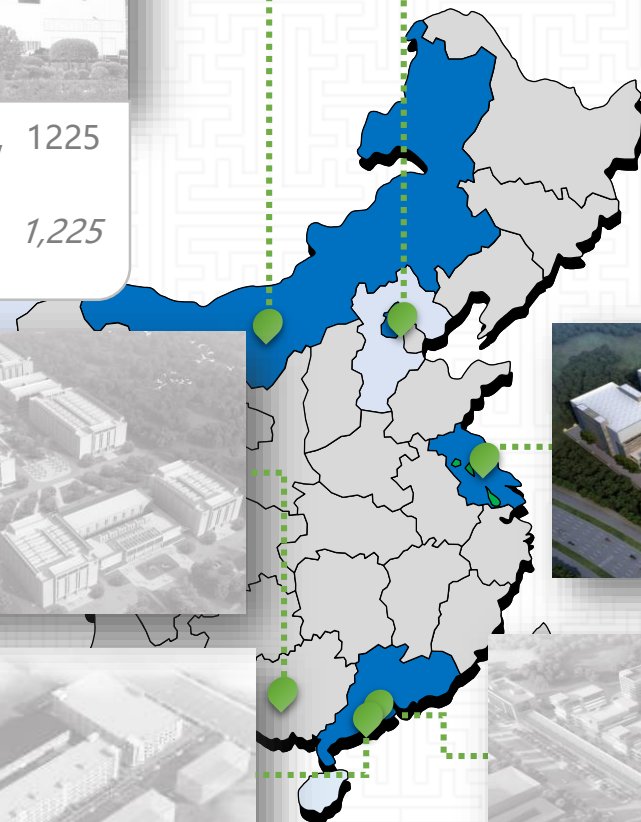
Beijing Majuqiao Data Center, 16,000m², 2,903cabinets; Operational since 2015

常州钟楼数据中心, 规划面积9万平方米, 1万个机柜, 一期2952柜, 2016年投产

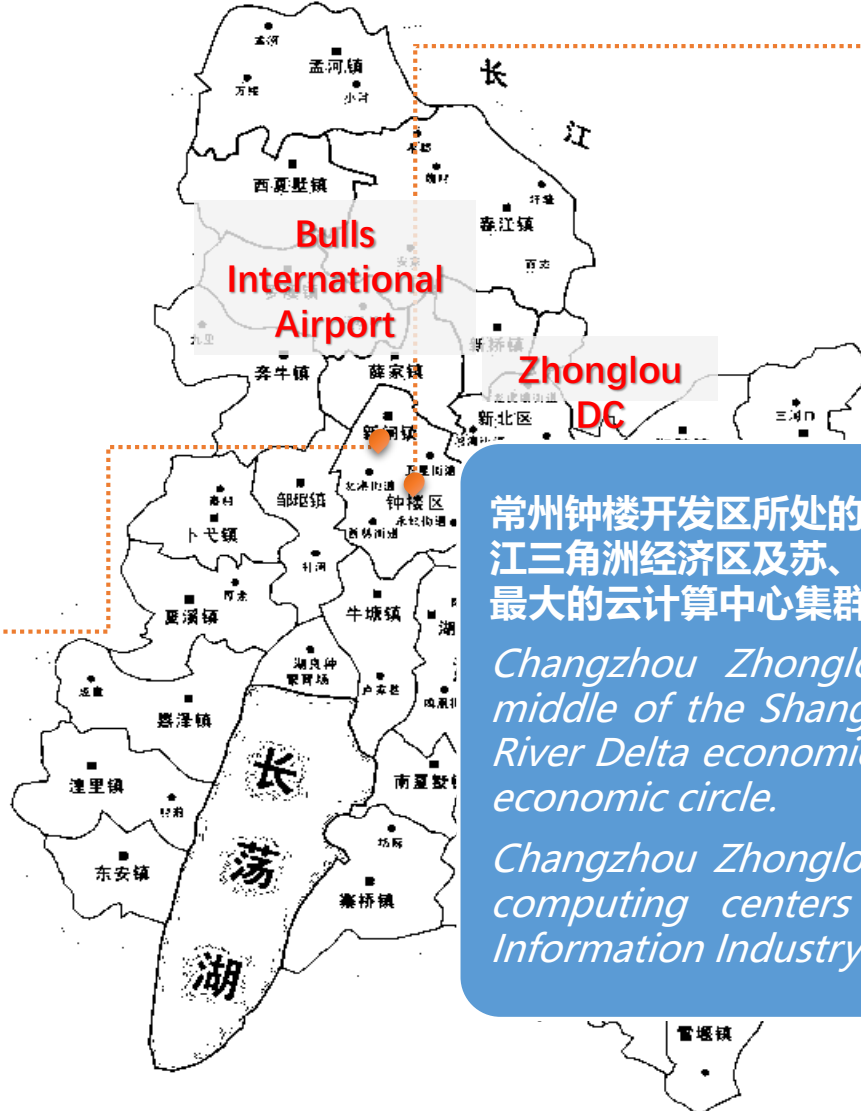
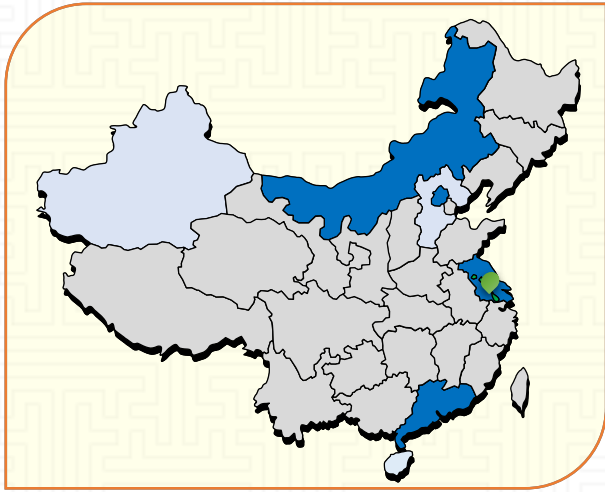
Changzhou Zhonglou Data Center, 90,000m², 10,000 cabinets; 1st Phase 20,000m², 2,952 cabinets; Operational since 2016

广州瑞和数据中心, 20000平方米, 2500个机柜, 2018年投产

Guangzhou Ruihe Data Center, 20,000 m², 2,500 cabinets will operational in 2018.



地理位置 DC Location



常州钟楼数据中心位于江苏省常州市钟楼开发区桂花路22号

DC Address: NO. 22 Guihua Road, Zhonglou Economic Development Zone, Changzhou, Jiangsu 213000, China

数据中心距离常州奔牛国际机场仅30分钟车程。

Drive to the Changzhou bulls International Airport from the data center only 30 minutes.

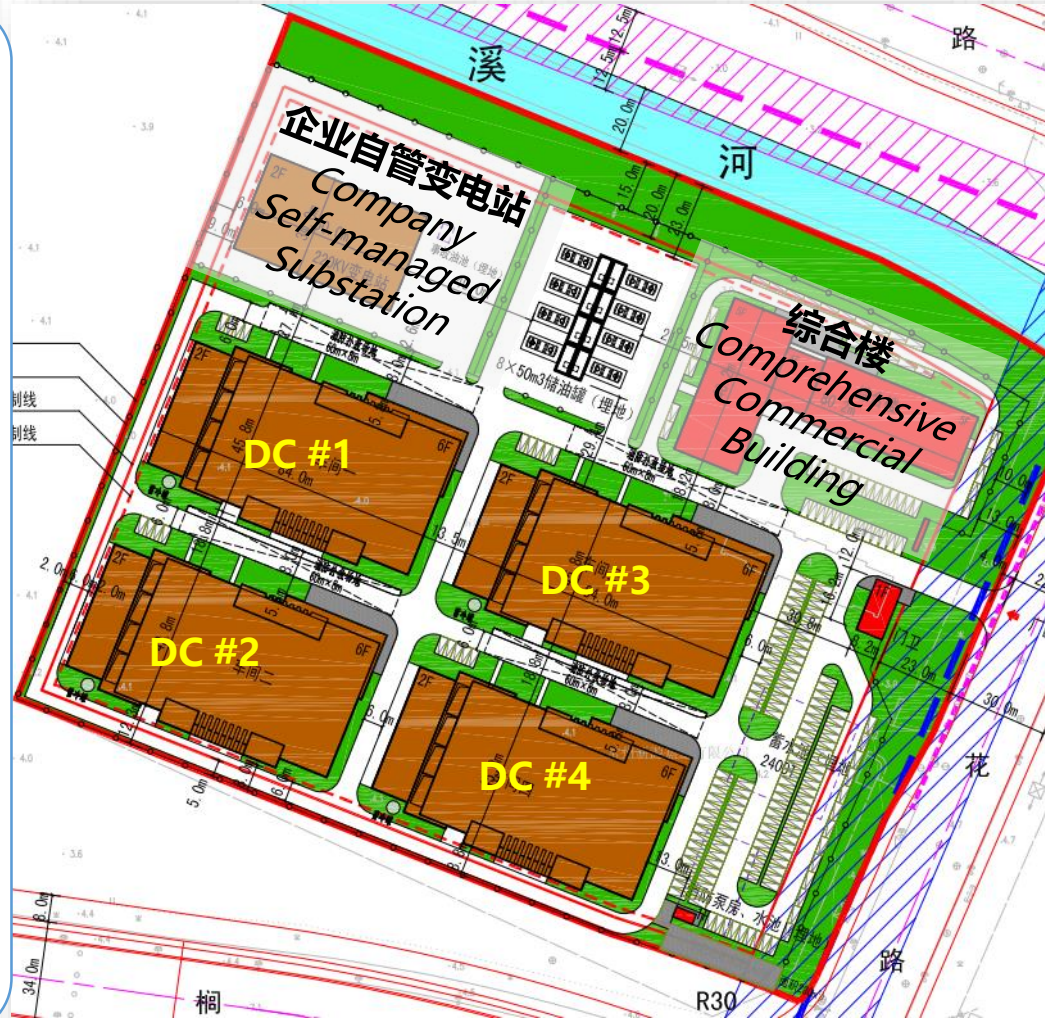
常州钟楼开发区所处的常州市，位于沪宁两大城市的中心位置，地处长江三角洲经济区及苏、锡、常经济圈内。常州钟楼数据中心是华东地区最大的云计算中心集群，名列2016年江苏省重大项目信息服务类首位。

Changzhou Zhonglou Development District, located in the middle of the Shanghai City and Nanjing City, in the Yangtze River Delta economic zone, and in the Suzhou-Wuxi-Changzhou economic circle.

Changzhou Zhonglou Data Center Cluster is the largest cloud computing centers in Eastern China, and the first Major Information Industry Project in Jiangsu Province among 2016.

总体规划 *Master Plan*

- 总用地面积54730m²，总建筑面积91063.3m²
The total land use area is 54,730m², total construction area is 91,063.3m².
- 数据中心四座，每栋建筑面积约2万平方米，总机柜数10000个
The data center cluster contains 4 data center buildings with 10,000 cabinets, each buildings' construction area is about 20,000m².
- 综合楼一座，建筑面积约9000平方米
An Comprehensive Commercial Building with construction area 9,000m².
- 企业自管变电站一座，总供电容量160000KVA。
A Company Self-managed Substation of total power 160,000KVA.



节能特色

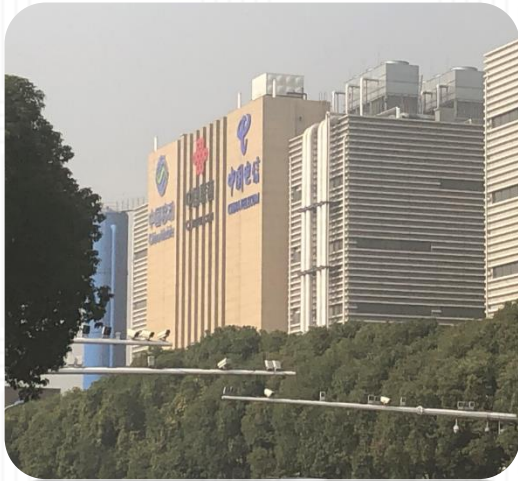
Features in Energy Saving

- **高效UPS**
High Efficiency UPS
- **清洁能源自发电技术**
Clean Energy Generation Technology
- **大规模应用蓄能调峰技术**
Large scale application of water cool storage technology to regulate the data centers' electricity load of day and night
- **智能变频控制系统自动调节运行状态**
Intelligent variable frequency control system to automatically adjust the running state



PUE ≤ 1.45

基础信息 *Basic Information*

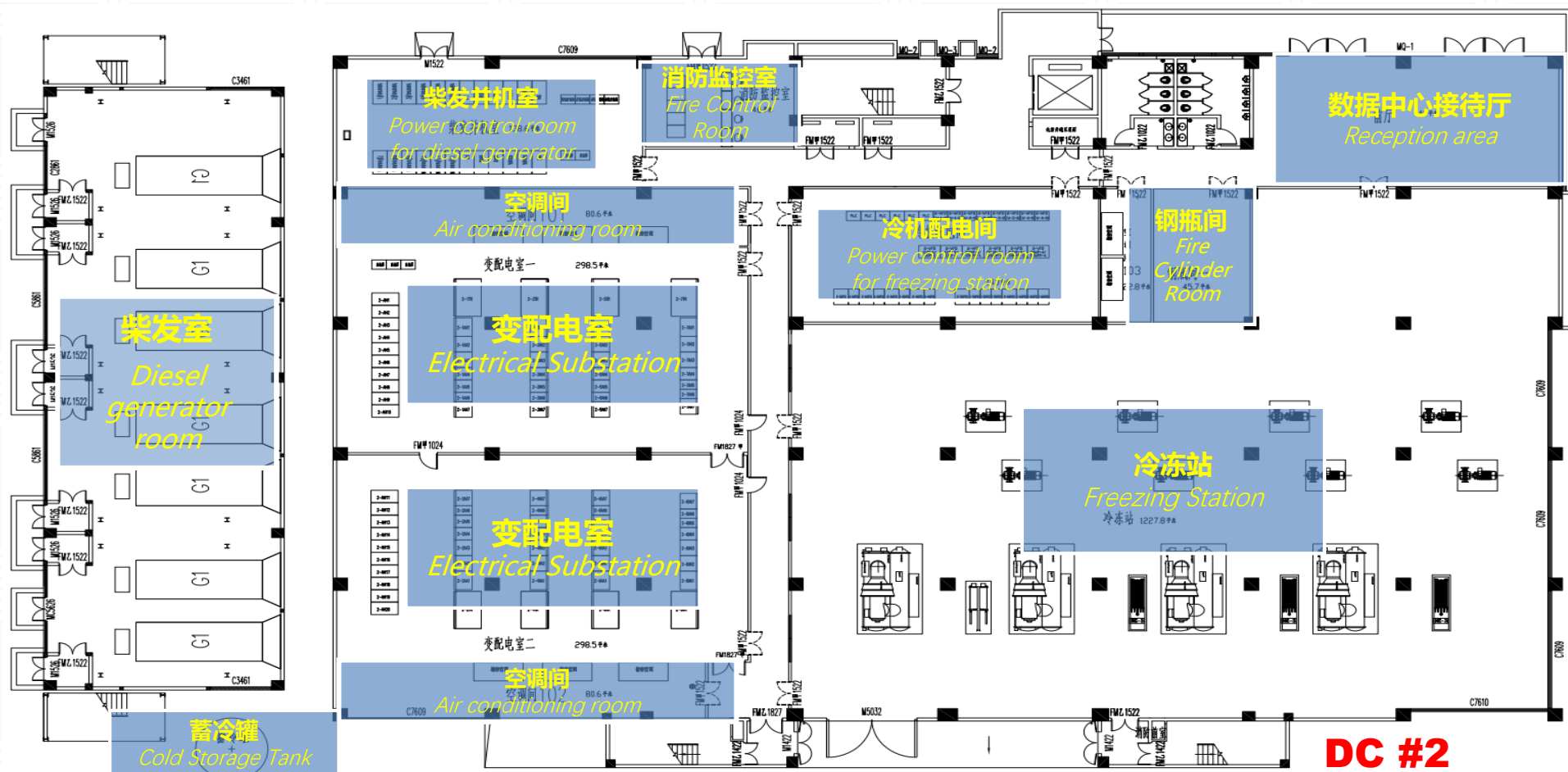


项目 Items	描述 Description		
电力保障 <i>Electric power security</i>	<ul style="list-style-type: none"> • 双路供电, 每栋数据中心总供电容量40000KVA <i>Dual paths, each building power supply capability: 40,000KVA</i> • 单机柜电力10A,13A,16A; 局部可按需改造 <i>Each rack power is up to 10A, 13A or 16A, and could be expanded Partially</i> 		
网络环境 <i>Connectivity</i>	<ul style="list-style-type: none"> • 可按需接入各运营带宽。 <i>China Mobile, and could be expanded as needed</i> 		
数据中心2号楼 DC #2	模块编号 <i>Modular No.</i>	模块面积 <i>Room Area</i>	机柜数量 <i>Racks No.</i>
管理机柜数 <i>IDC managed capacity</i>	201~202	300 × 2	164 × 2
	301~304	300 × 4	164 × 4
	401~404	300 × 4	164 × 4
	501~504	300 × 4	164 × 4
	601~604	300 × 4	164 × 4
数据中心2号楼 机柜总数 <i>Total Racks Number of DC #2</i>			2952

一层布局 *The layout for the 1st Floor*

数据中心一层主要用于安放动力设施，并规划有接待区域。

The 1st floor of data center is mainly used to place the power facilities, the freezing station, and the reception area.



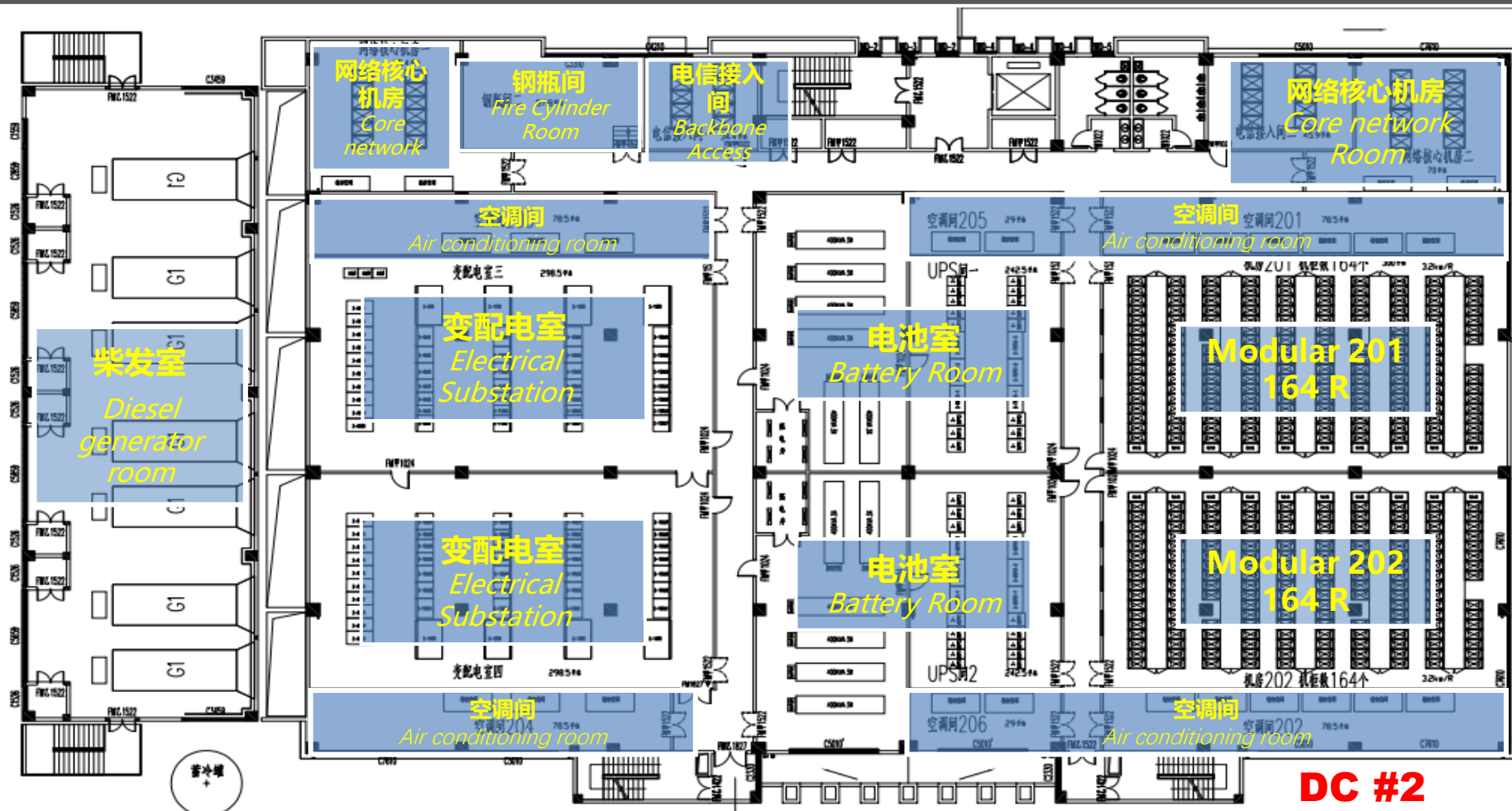
DC #2

二层布局

The layout for the 2nd Floor

数据中心二层规划有动力设施间、核心网络机房和两个模块机房。

The 2nd floor of data center is mainly used to place the power facilities, the core network room and two modular room.

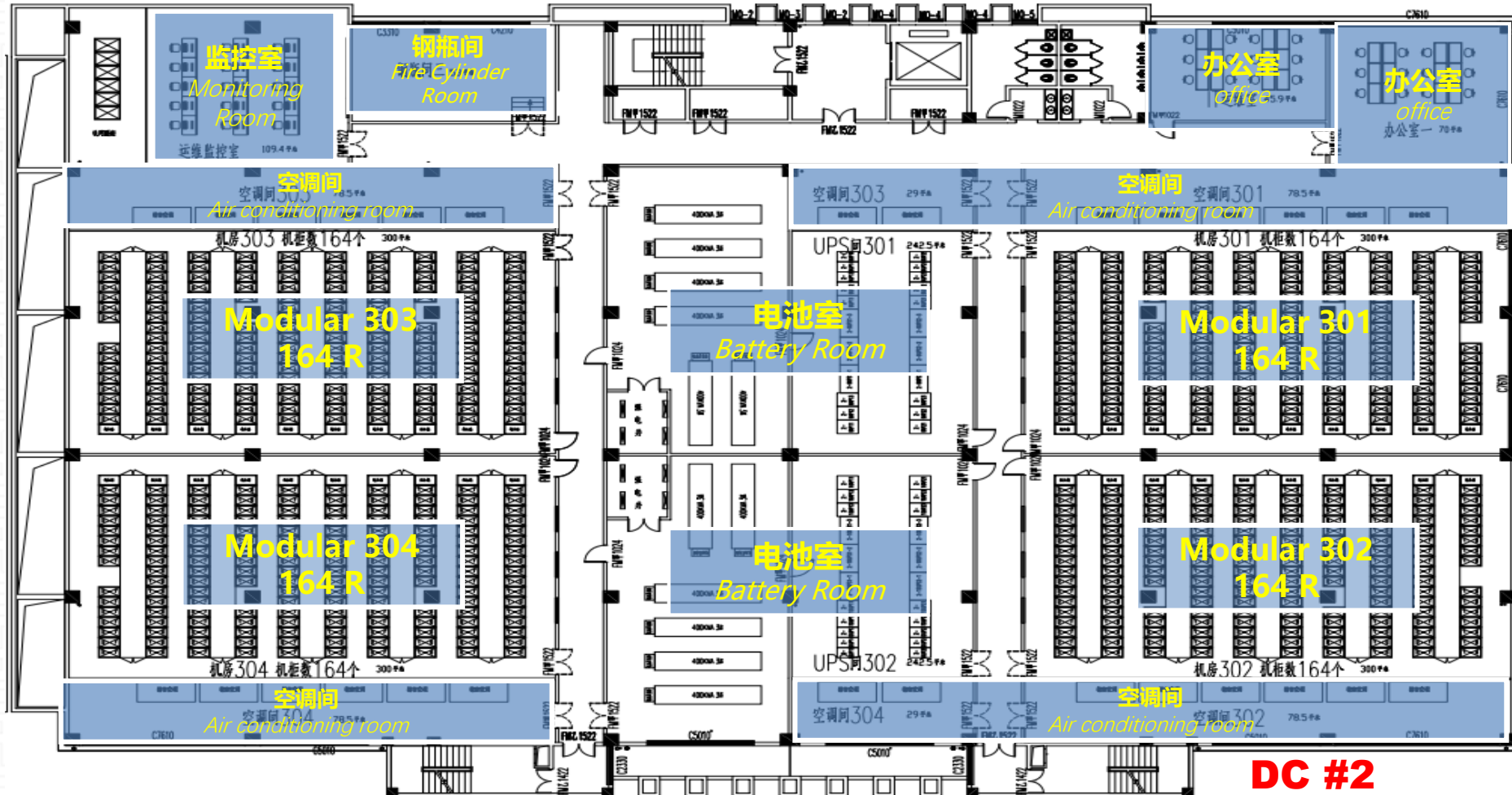


三~六层布局

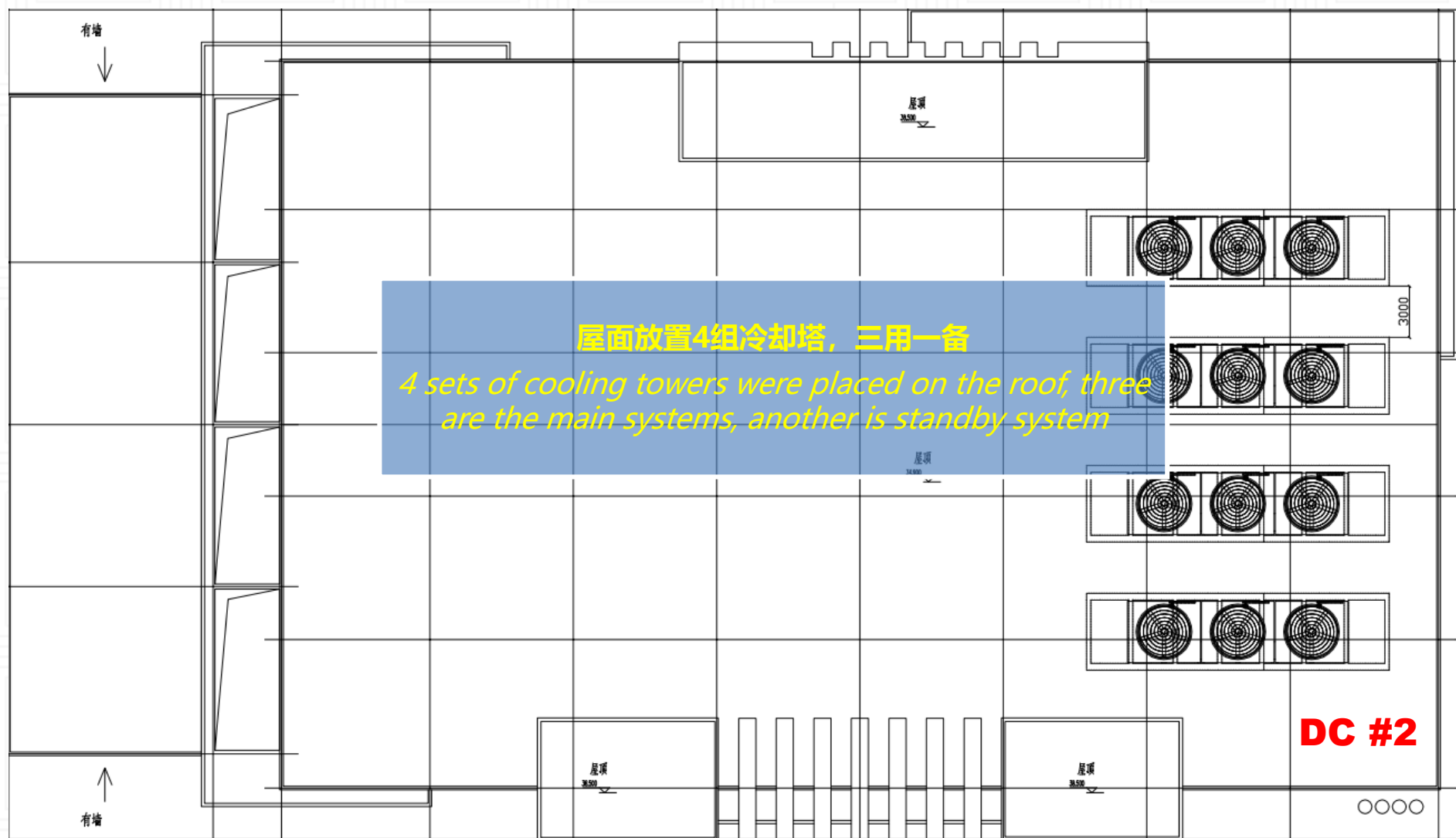
The layout for the 3rd to 6th Floor

数据中心三到六层规划为运维团队办公区和模块机房，每层2个办公室、4个模块机房。

The 2nd floor of data center is mainly used to place the power facilities, the core network room and two modular room.



屋顶布局 *The layout for the Roof*



机房管理服务

IDC Management Services



项目 Items	描述 Description
安保消防 Security System	<ul style="list-style-type: none">• 授权门禁系统、红外探测、电子围栏 Access control system, infrared detection, electronic fences• 全方位视频监控系统, 可按需增加高清摄像设备 Monitoring cameras; HD cameras could be added as needed• 消防与空调、新风、门禁、计算机供电和市电等系统联动 The fire-fighting system linked air-conditioning system, air exchange system, access control system, IT facility power supply system and external electric power system.
来访接待 Visiting Reception	<ul style="list-style-type: none">• 人员和设备出入记录 Personnel and equipment access records• 数据中心概况讲解、参观引导 Introduce the basic info of the data center, guide to visit
驻场运维 Field Operation and Maintenance	<ul style="list-style-type: none">• 7×24小时值守, 供电、网络状态监控 7*24 hours guarding, power fluctuation state monitoring, bandwidth fluctuation state monitoring• 日常巡检, 故障排查和预警 Daily inspection, trouble shooting and early warning• 运维事件响应, 应急处理, 经授权的远程协作 Emergency response, emergency handling, authorized remote collaboration• 客户布线方案实施和优化, 耗材代购 Customer cabling program implementation and optimization, Network supplies agent procurement

华东云计算基地设计效果

Changzhou Zhonglou Tower DC Cluster



实景

Data Center Infrastructure



常州钟楼数据中心 | 外观实景

实景

Data Center Infrastructure



常州钟楼数据中心 | 综合楼实景

实景 *Data Center Infrastructure*



常州钟楼数据中心 | 监控中心

实景

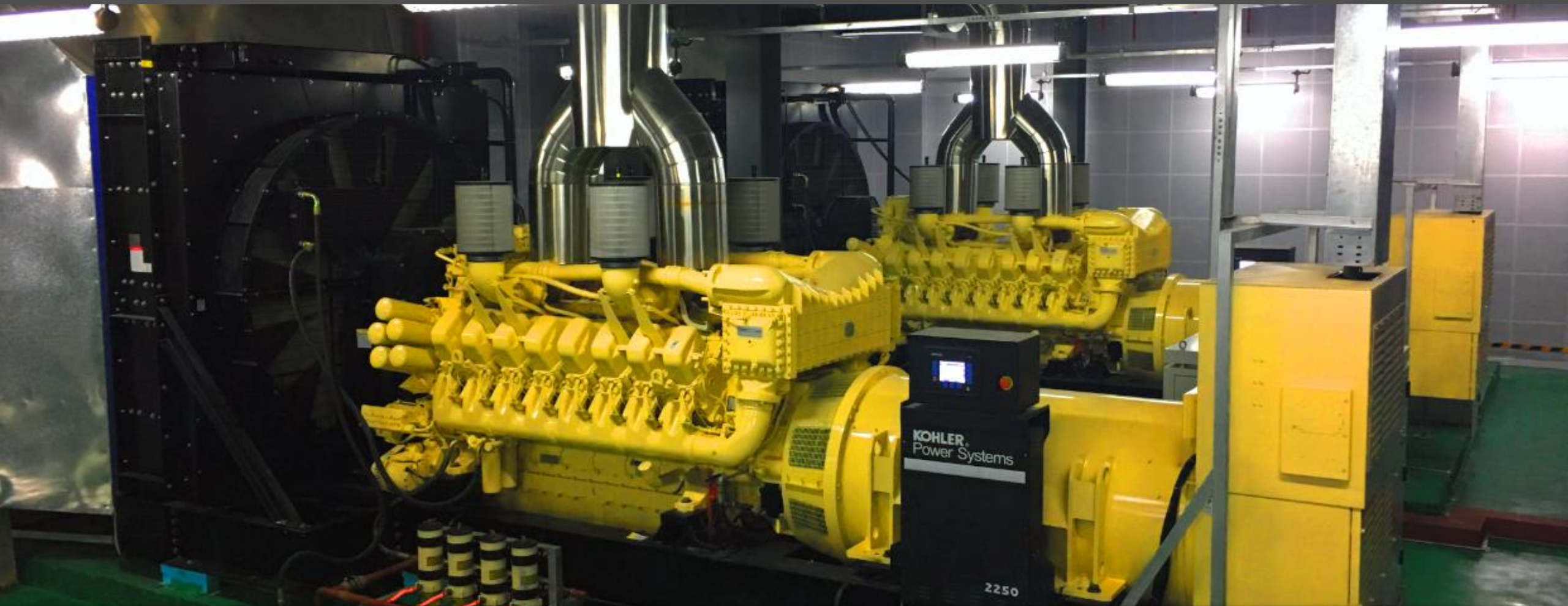
Data Center Infrastructure



常州钟楼数据中心 | 机柜冷热通道

实景

Data Center Infrastructure



常州钟楼数据中心 | 柴油发电机组

实景

Data Center Infrastructure



常州钟楼数据中心 | 配电间

实景

Data Center Infrastructure



常州钟楼数据中心 | 电池间

实景

Data Center Infrastructure



常州钟楼数据中心 | 冷水机组

实景

Data Center Infrastructure



常州钟楼数据中心 | 空调间

